

DORA GRGTM

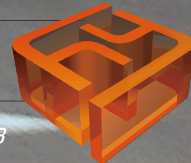
Glass Reinforced Gypsum Panel

玻璃纖維 增強石膏复合材料

YEUNG'S

fiberglass

楊氏玻璃纖維 est. 1983



ISO 9001:2015 and ISO 14001:2015
CERTIFIED







Installation Tips

- The DuraGRG* companies do not install but will gladly recommend experienced installer names or installation procedures.
- DuraGRG* G.R.G. elements are strong, amazingly lightweight and normally lifted and installed by one or two persons.
- Thickness: 1/8" - 3/16" (3-5 mm) with thicker edges 2-3 lbs/sq.ft. (10-15 kg/sq.m)
- Weight: edges 2-3 lbs/sq.ft. (10-15 kg/sq.m)
- Ceiling elements are usually suspended. Most other parts are face fastened with screws (countersunk and filled) through "built-in" reinforcing strips.
- Moldings, normally (2400 mm) long can be supplied with factory molded corners or field mitered. Any type of mechanical or hand saw can be used for field cutting, but because of the glass fibers, carbide tipped blades are recommended. Cutting dust is not a health hazard.
- The framing/back up systems and fastening points are normally less frequent than for gypsum board.
- For a continuous look, joints are taped and field painting is the same as for gypsum board. (Alkyd/oil based primers are recommended, but high gloss paints should be avoided.)
- Elements can be made in all shapes and sizes, but transport and handling conditions may make very large parts impractical.
- Being non-combustible, fire authorities are always glad to see Formglass* G.R.G. on the job.



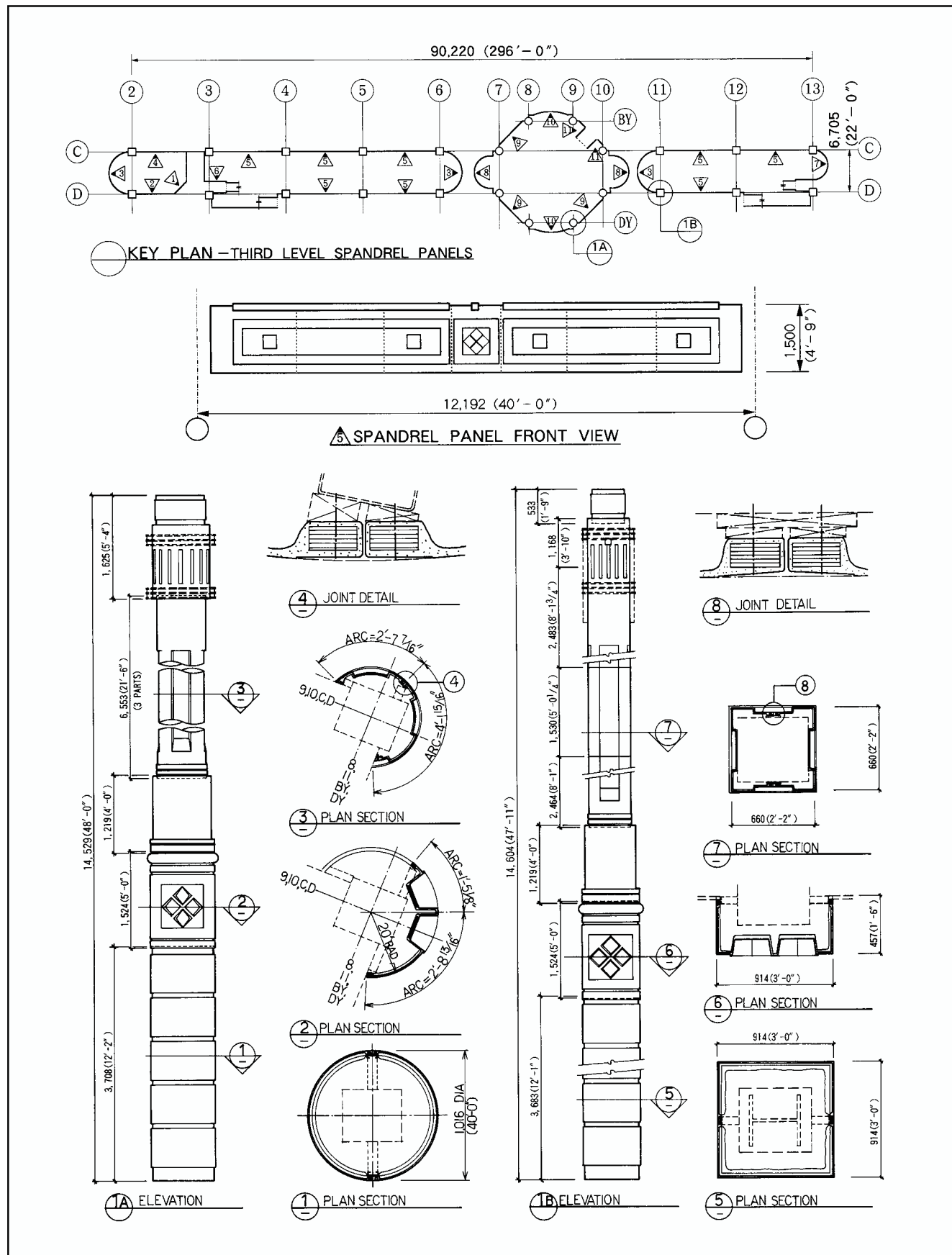
©

Details

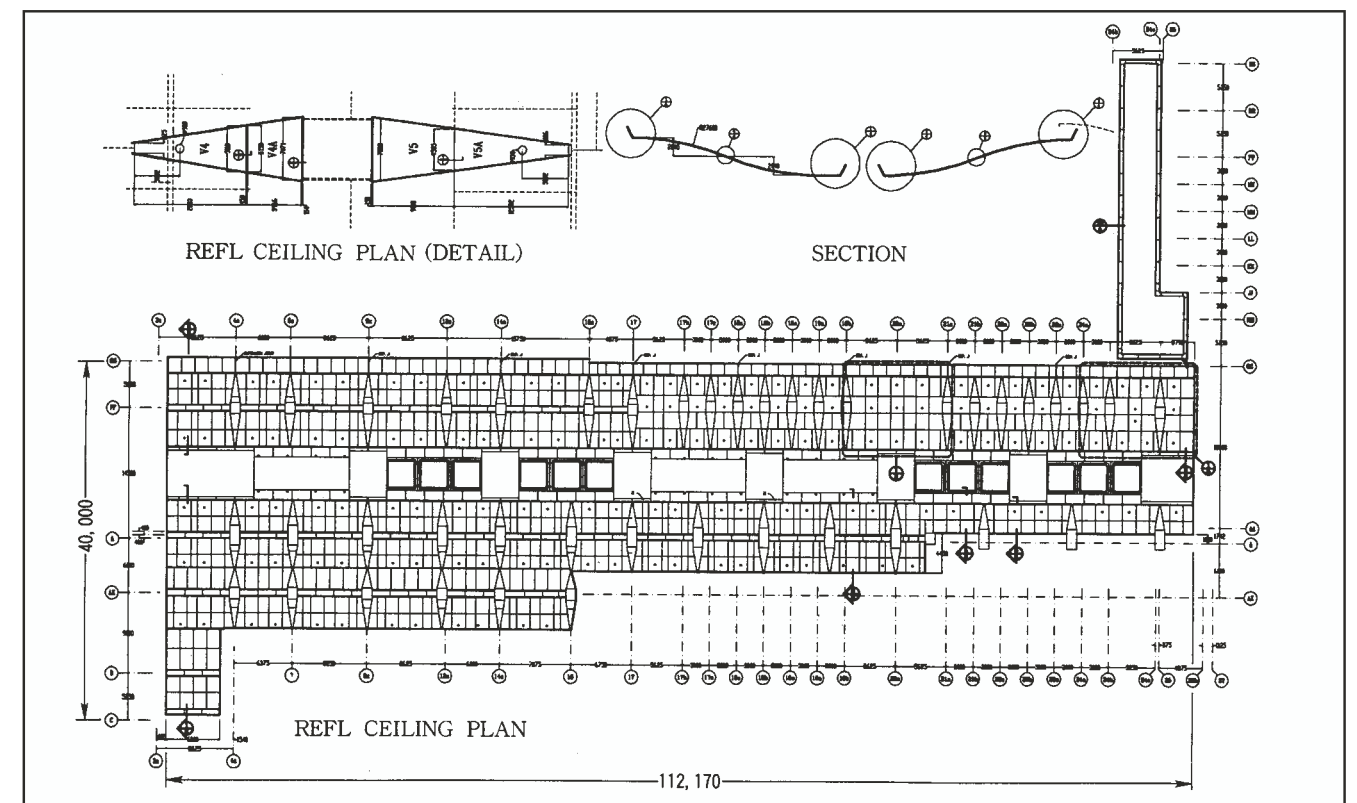


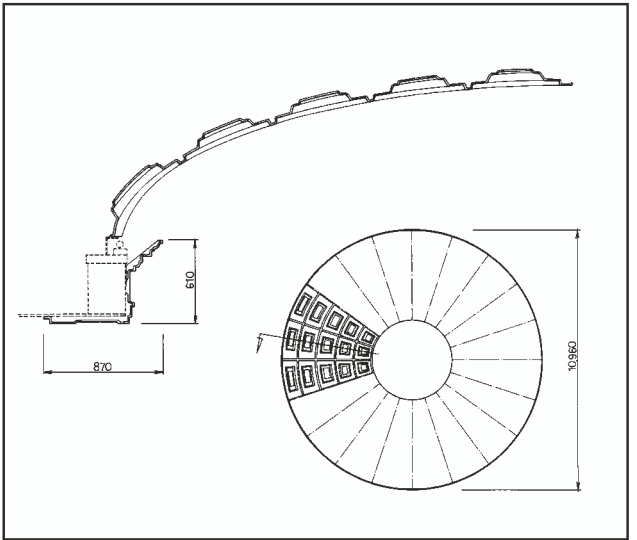
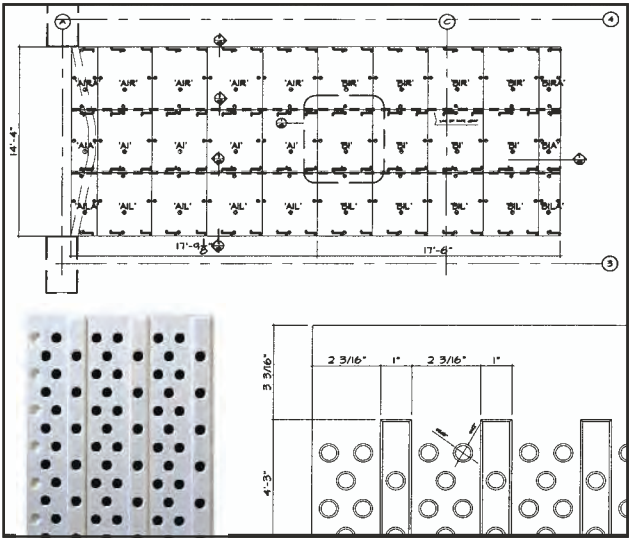
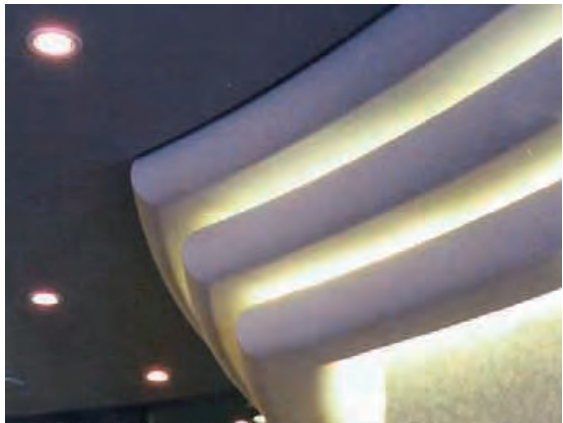
Design Suggestions

- Use the same shape as often as possible or one from our existing mold inventory, every shape, including each curve or radius requires its own mold. Molds will add to costs and delivery times.
- Parts can be made in near any shape or size but transport, site access and handling problems may make very large parts impractical.
- Large flat surfaces are often more economical in drywall while very small moldings may be less expensive in wood. For a continuous look, joints can be (field) taped while a "broken-up" appearance can be achieved with reveals or caulked joints. Always allow for manufacturing and field tolerances at the joints.
- Very small reveals or projections less than 1/4" (6mm) "stand alone" elements work well but these small features can be difficult to line up and/or tape (on site) from one part to the next.
- DuraGRG* G.R.G. is non-combustible but is not "hourly rated". It can be used in high humidity climates and in "rain" protected exterior soffits.
- All elements are "made to order" and a standard price list is not available. Send us a sketch with the required quantities and DuraGRG will supply pricing within a few days.
- Specify DuraGRG* products to ensure quality and "on time" delivery.

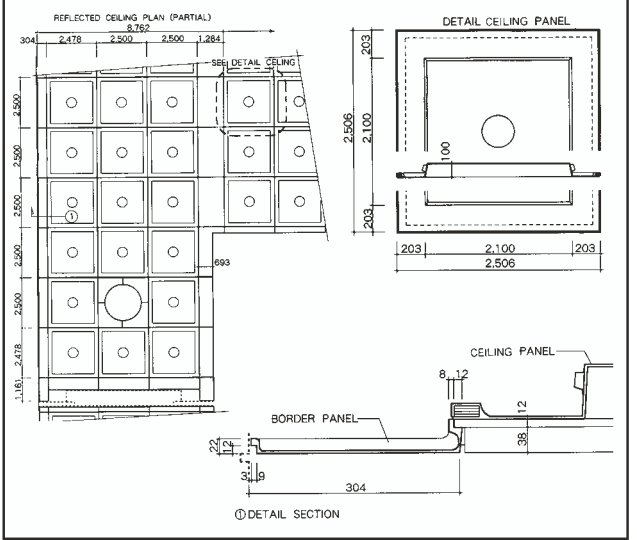
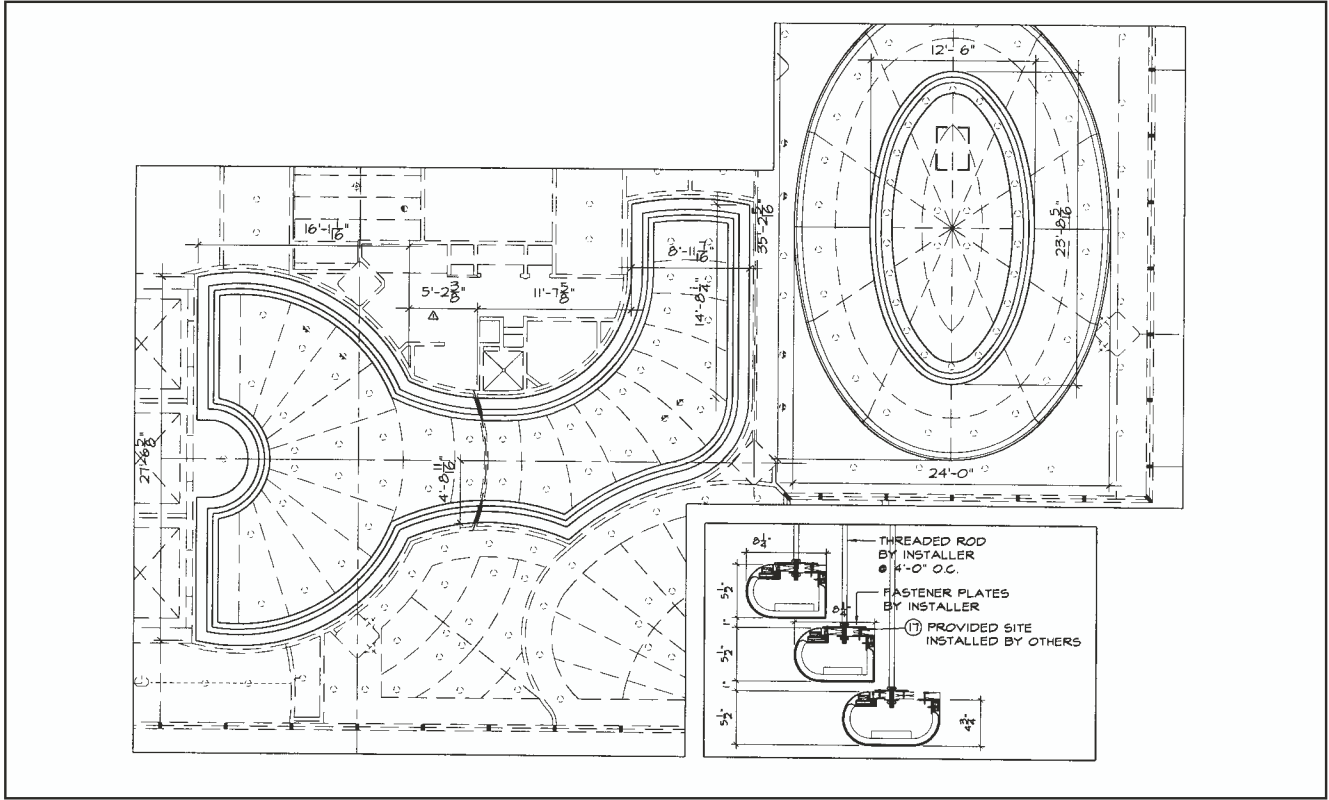


Details





Details Moulding, Lightcovers & Reflectors





Columns

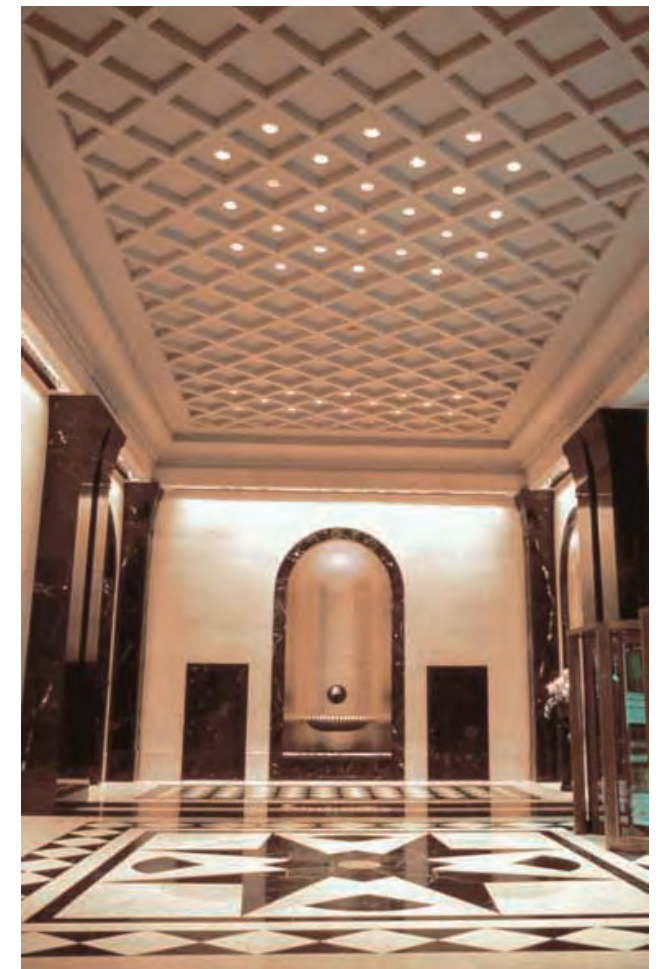




Mouldings



Ceilings



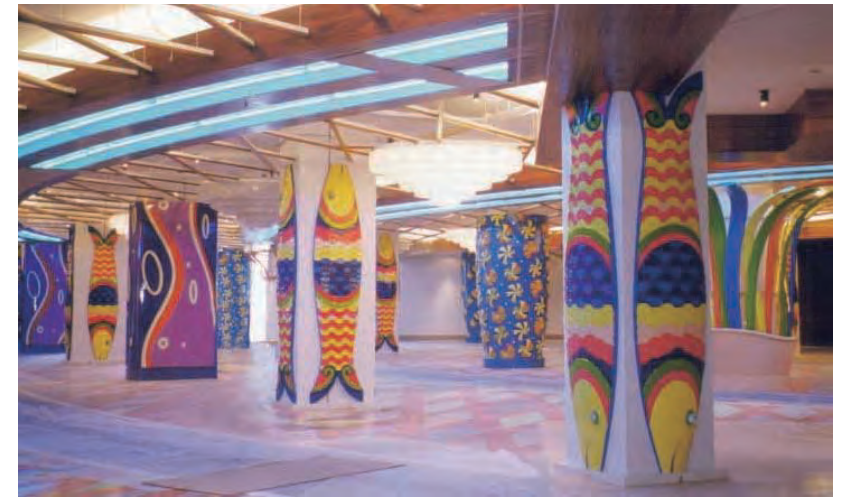


Reflectors & Lightcovers



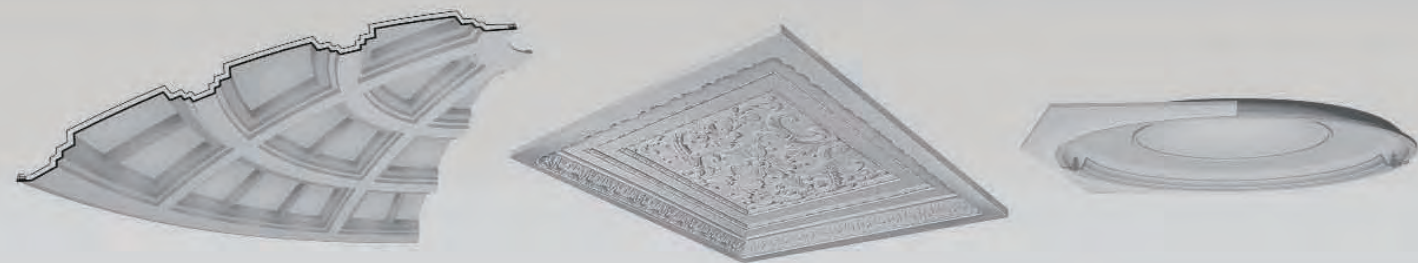


Vaulted
Ceilings



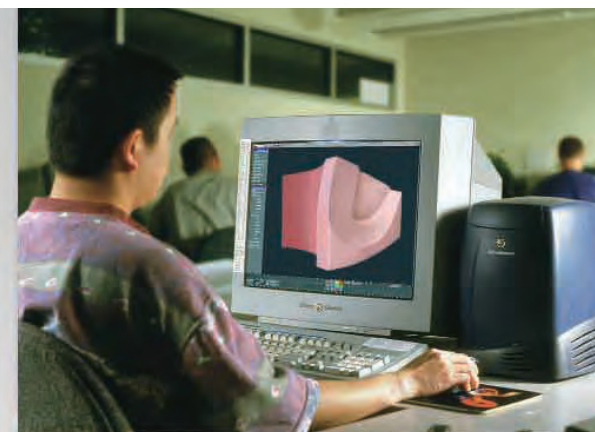
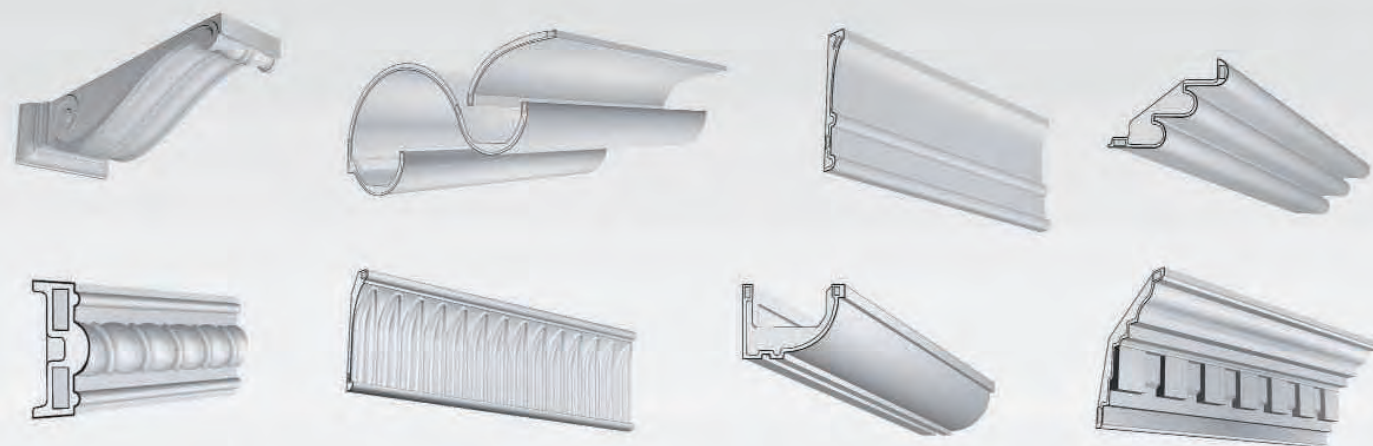
Special
Project



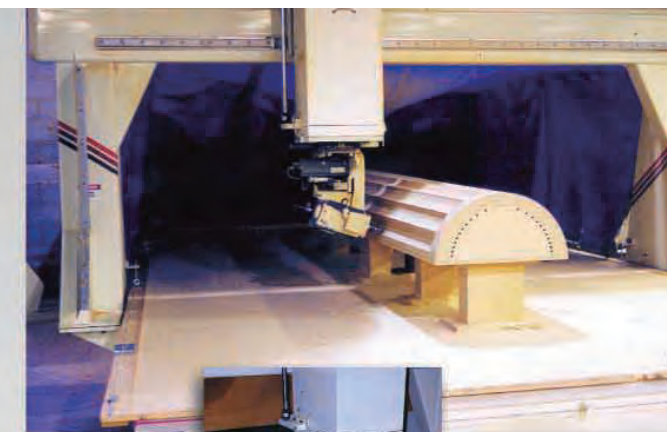


Design

①



①



②



③



④

DuraGRG. MANUFACTURING PROCESS

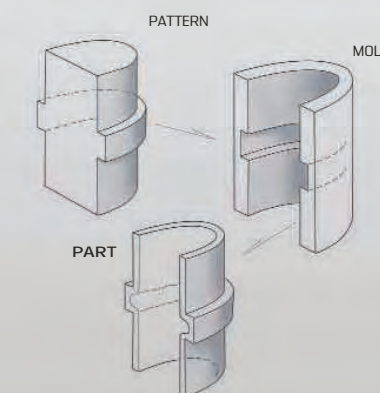
- ① DuraGRG C.A.D. generated shop drawings, (showing parts and installation methods) are submitted for approval.
- ② After approval, advanced C.A.M. equipment cuts patterns that look identical to the final parts.

- ③ 'Mirror Image' molds (shown in red) are fabricated from the patterns.

White, high strength 'alpha' gypsum and glassfiber mat is then hand applied to the molds. Metal or plywood strip reinforcement is incorporated at the same time.

- ④ Once the gypsum has set, the strong 1/8" - 3/16" (3-5mm) thick parts are removed from the molds, then quality inspected and stored.

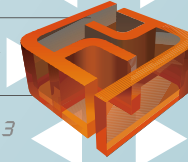
Note: G.R.G. parts are thin but rigid and cannot be bent. Every curved or radiused element requires it's own pattern/mold.





YEUNG'S

fiberglass



楊氏玻璃纖維 est. 1983

DORA GRG™

Glass Reinforced Gypsum Panel

玻璃纖維 增强石膏复合材料

Yeung's Fiberglass Company

Government Approved Specialist Contractor

Unit B, 22/FL, CNT Tower,
338 Hennessy Road
Wanchai, Hong Kong
Tel: (852) 2893 8865
Fax: (852) 2893 6321
E-mail: yeungs@fiberglass.com.hk
Web: www.fiberglass.com.hk

楊氏玻璃纖維公司

政府認可公共工程物料專門承造商

香港灣仔軒尼詩道338號
北海中心 22 樓 B 室
電話: (852) 2893 8865
傳真: (852) 2893 6321
電郵: yeungs@fiberglass.com.hk
國際網絡: <http://www.fiberglass.com.hk>



Certificate No: Q173



Certificate No: E829



HKCS 011



HKCS 011

